

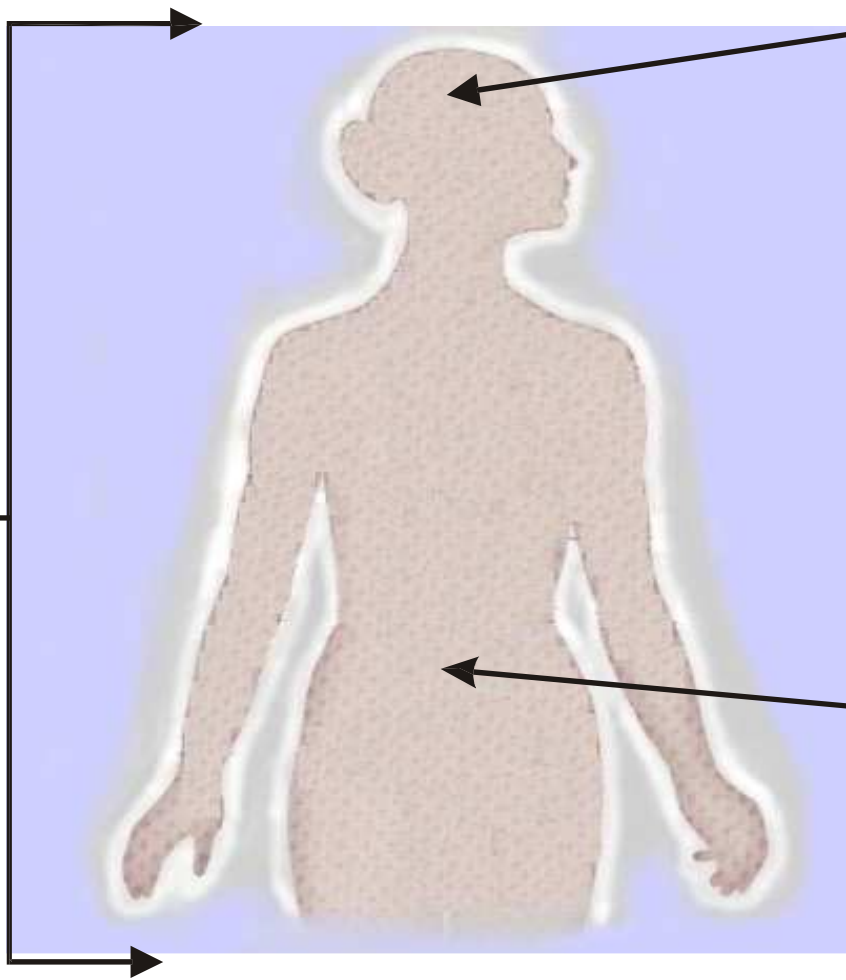
Lifestyle Eating And LEAP Performance

For more information, contact:
 Alecia Routt
 737 Pearl Street Suite 201
 La Jolla, CA 92037
 Ph: 619-980-2117
 Fax: 619-564-4492

www.sandiego-dietitian.com
aleciard@hotmail.com

Clinical Indications For MRT Testing & LEAP Disease Management

Non-IgE mediated adverse food reactions can be an important symptom provoking component in D-IBS, Migraine, and Fibromyalgia. The charts below list clinical parameters that when present, either increase or decrease the likelihood that hypersensitivity reactions play a role in the etiology of the patient's condition.



Migraine

Increased Probability

- ⌚ Chronic & frequent >2x per month
- ⌚ Frequent headaches in between episodes
- ⌚ Personal or family Hx of IgE Mediated allergy
- ⌚ Hx of adverse food reactions
- ⌚ Other target indications or secondary indications are co-morbid

medication

Decreased Probability

- ⌚ Infrequent (<1x per month)
- ⌚ Hormonally induced
- ⌚ Weather induced
- ⌚ Trauma induced

Fibromyalgia

Increased Probability

- ⌚ Co-morbid diarrhea
- ⌚ Personal or family Hx of IgE Mediated allergy
- ⌚ Hx of adverse food reactions

secondary indications are co-morbid

- ⌚ Resistant to relief from medication

Decreased Probability

- ⌚ Diarrhea not present
- ⌚ Co-morbid constipation (Unless constipation is due to side effect of medication)

Irritable Bowel Syndrome

Increased Probability

- ⌚ Diarrhea component (either D-predominant or Cyclic)
- ⌚ Chronic & frequent
- ⌚ Refractory
- ⌚ Personal or family Hx of IgE Mediated allergy
- ⌚ Hx of adverse food reactions
- ⌚ Other target indications or secondary indications are co-morbid

Decreased Probability

- ⌚ Constipation predominant
- ⌚ Infrequent attacks (< 2x/month)

Secondary Indications & Common Co-Morbidities

- | | | |
|---------------------------------|-----------------------------------|------------------------------------|
| ● Functional Diarrhea | ● Chronic Sinusitis | ● Autism Spectrum Disorders |
| ● Functional Dyspepsia | ● Non-Seasonal Rhinitis | ● Attention Deficit Disorder |
| ● Recurrent Secondary Headaches | ● Chronic Sinus Headaches | ● Depressive/Anxiety Disorders |
| ● Celiac Sprue | ● Chronic Otitis Media w/effusion | ● Hyperactivity with or w/o A.D.D. |
| ● Functional Abdominal Pain | ● Chronic Urticaria | ● Inflammatory Arthritis |
| ● Inflammatory Bowel Disease | ● Eczema | ● Chronic Fatigue Syndrome |